

Bellevue Road

ST GEORGE

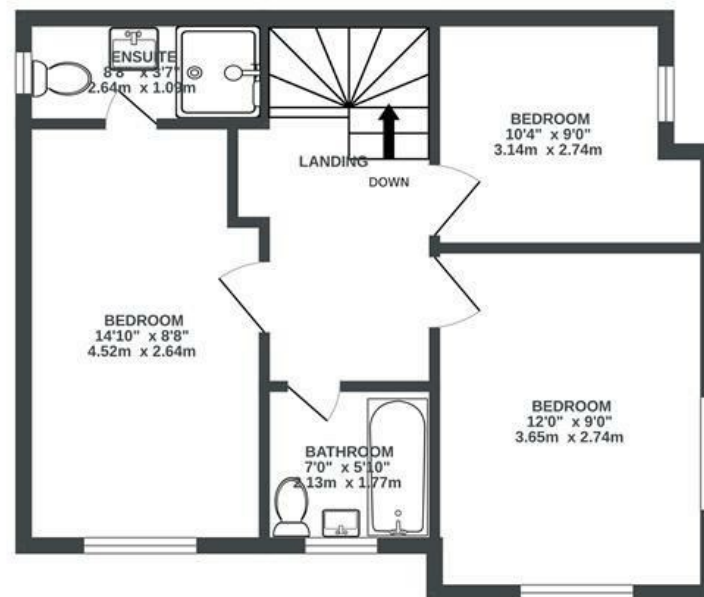
APPROXIMATE FLOOR AREA
86.6 SQM / 932 SQFT



GROUND FLOOR



FIRST FLOOR



Boardwalk

Bellevue Road

ST. GEORGE, BRISTOL



£395,000



3 Bedrooms



Bristol, BS5



2 Bathrooms

7PG

"We've loved our time in St. George. It's an ideal location within walking distance to several pubs and restaurants, as well as St. George Park. Our fave spots include the Rose & Crown, Olympus, and The Red Church. Bristol City Centre is still very accessible while benefiting from a quiet, friendly neighbourhood away from the "busy of the city". We have family around various parts of Bristol, and we're in the perfect place to be able to visit them easily when needed. We're also spoilt for choice when it comes to local, independent bakeries - Bristol Loaf, Orchard Bakery, Brizzle Born & Bread, and Baker's Corner are all amazing!"

